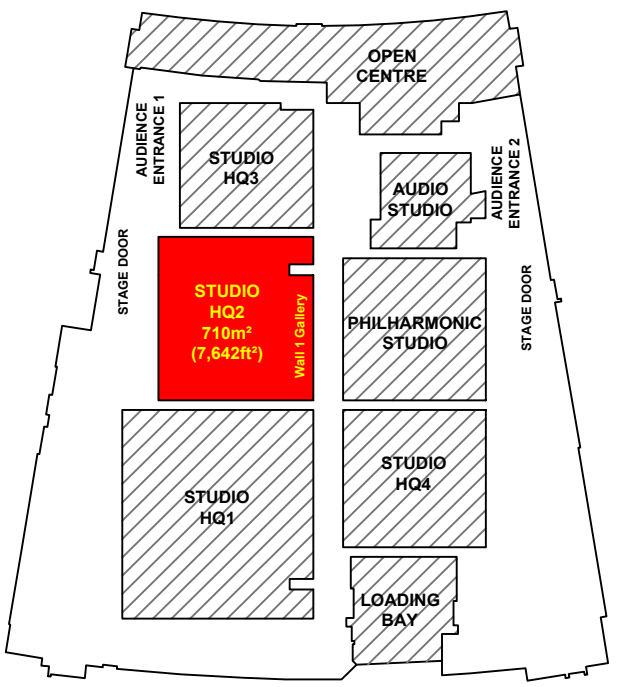


MEDIA CITY

HQ2 Studio Plan

Setting Layout

STUDIO HQ2 LOCATION PLAN



Measurements

- STUDIO FLOOR GRID MADE UP OF 600mm SQUARES
- STUDIO WALL 2 TO WALL 4 30.584m (100.3ft)
- STUDIO WALL 2 TO WALL 4 WITHOUT FIRELANE 29.4m (96.45ft)
- STUDIO WALL 1 TO WALL 3 22.92m (75.2ft)
- STUDIO WALL 1 TO WALL 3 WITHOUT FIRELANE 20.8m (68.24ft)
- STUDIO SPACE 710 sq m (7,642 sq ft)
- STUDIO SPACE WITHOUT FIRELANE 611.52 sq m (6581.74 sq ft)
- IMPOSED LOAD 12kN per sq m
- HEIGHT TO UNDERSIDE OF GANTRY 7.372m
- HEIGHT TO GANTRY UPPER HANDRAIL 8.449m
- HEIGHT TO UNDERSIDE OF GRID 11.5m
- HEIGHT TO OUTER CYC TRACK IS 6m
- HEIGHT TO MIDDLE CYC TRACK IS 6m
- HEIGHT TO INNER CYC TRACK IS 9m
- MAXIMUM HEIGHT OF SCENERY HOOKS IS approx 10m
- MAXIMUM HEIGHT OF LIGHTING BARS IS 10m
- SIZE OF LOAD IN DOOR: 3m Wide , 5.2m High

Hoists

- NUMBER OF LIGHTING HOISTS:
106 AT 2m, 4 AT 1.5m
- 18 SCENERY TRACKS WITH 3 HOISTS IN EACH
- NUMBER OF SCENIC HOISTS WITH SWL 180KG: 54

Mains

- GROUND LEVEL MAINS:

- 2x 125A 3φ
- 2x 63A 3φ
- 16x 32A 1φ (FUSED AT 25A)
- 32x 16A 1φ
- 64x 3Kw SINEWAVE DIMMERS

- GANTRY MAINS:

- 2x 63A 3φ
- 8 x 32A 1φ (FUSED AT 25A)
- 16x 3Kw SINEWAVE DIMMERS

- LIGHTING HOIST MAINS:

- 110x 32A 1φ (FUSED AT 25A) WITH A 16A 1φ PIGGY BACKED
- 516x 3kw SINEWAVE DIMMERS

- GRID MAINS:

- 3x 32A 3φ (FUSED AT 25A)

SWL

- STUDIO FLOOR 12kN/m²
- GANTRY FLOOR 500kg/m²
- GANTRY HANDRAIL CENTRE POINT 100kg, THIRD POINTS 120kg
- GRID 150kg/m²

KEY:

Fire Lane

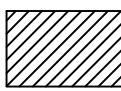
Water Tap

Fire Alarm Beacon

Fire Alarm Sounder

Facility Panel

3 Phase Mains Outlets



PRODUCTION:

DIRECTOR:

DESIGNER:

DRAWN BY:

PRODUCTION DATE:

Useful Telephone Numbers

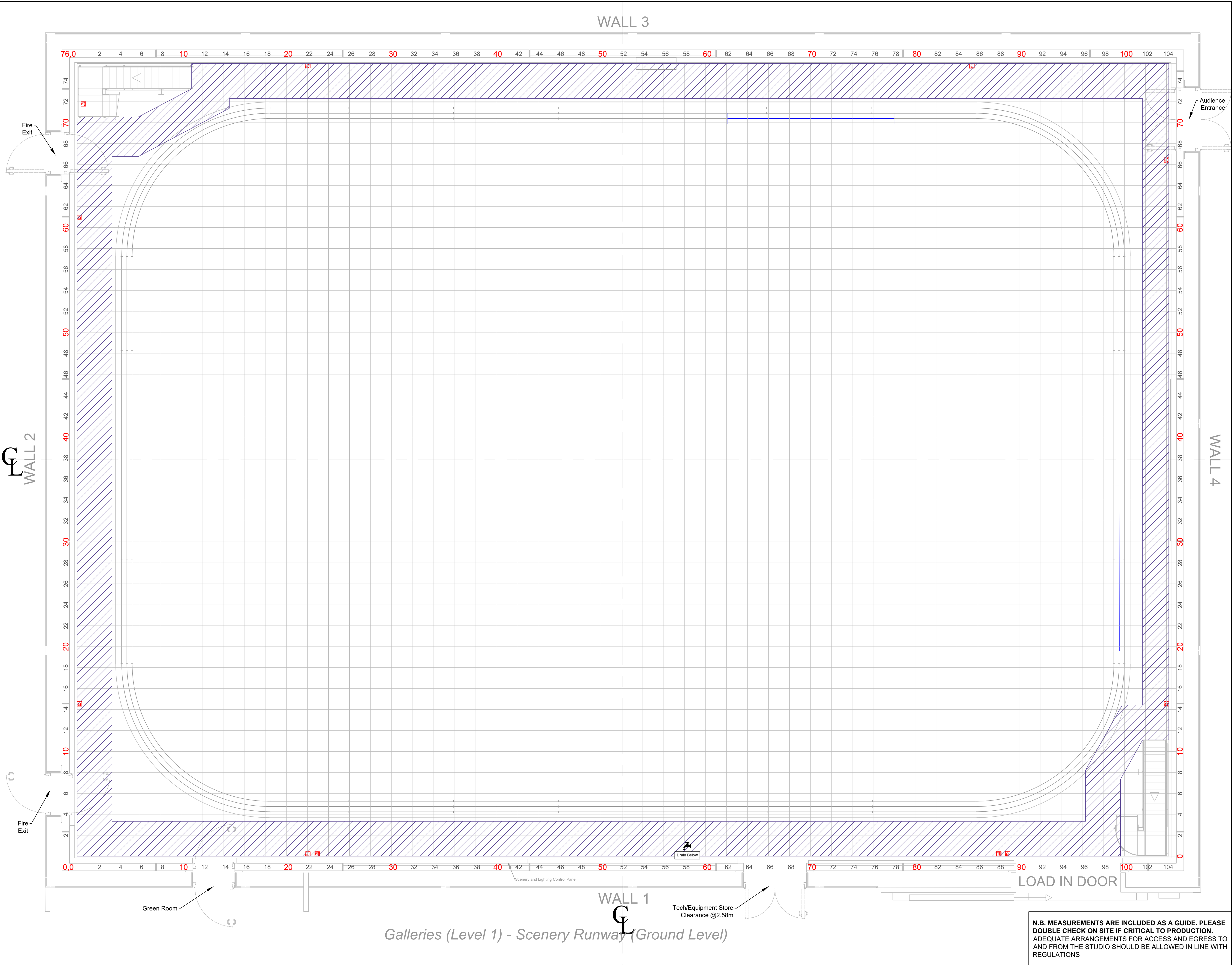
24hr Control Room 0161 855 6400
dock10 office 0161 886 5111
MCR 0161 886 5151

Unauthorised copying or
distribution is prohibited

SCALE:

A1 @
ISO A1 (841.00 X 594.00 MM)

Version: 2
Drafted 10/06/2026,



N.B. MEASUREMENTS ARE INCLUDED AS A GUIDE. PLEASE
DOUBLE CHECK ON SITE IF CRITICAL TO PRODUCTION.
ADEQUATE ARRANGEMENTS FOR ACCESS AND EGRESS TO
AND FROM THE STUDIO SHOULD BE ALLOWED IN LINE WITH
REGULATIONS